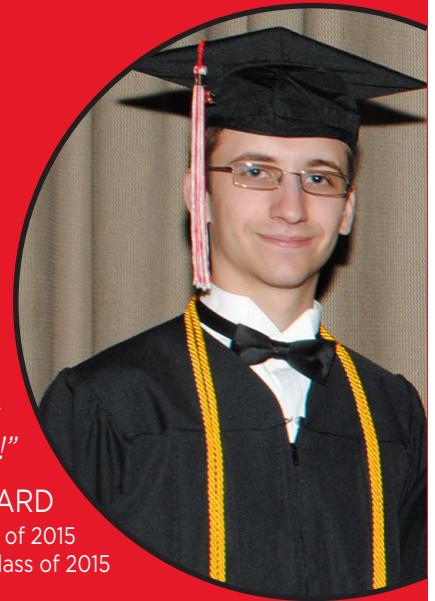


Berrien County 5th Year Early/Middle College

Get a head start on college and in life by earning an associate's degree or certificate for FREE, while you're still in high school through the Berrien County 5th Year Early/Middle College program. Tuition, books, and fees are provided at no cost to students and families.

"I earned an Associate Degree while I was still in high school and enrolled in WMU's computer software engineering program as a Junior!"

JAMES WARD
LMC Class of 2015
Buchanan High School Class of 2015



HOW DOES IT WORK?

Basically, you will earn a college degree and or certificate. Students take some college classes during 11th and 12th grades, and then attend college full time during "grade 13," or a fifth year of high school to complete the program.

WHAT ARE THE BENEFITS?

1. Save a ton of money. The national average cost of attending a four-year public college is more than \$28,000 per year. By starting college while in high school, you could cut your college costs in half.
2. Get a head start on your career. Whether you earn a career certificate or an Associate's Degree, you will advance through your educational path and start your career years faster than a traditional educational program.
3. Transition smoothly to four-year colleges. Lake Michigan College participates in the state-wide Michigan Transfer Agreement and has individual transfer agreements with universities throughout Michigan and Indiana.

WHAT DEGREES CAN I EARN?

Associate/Transfer Degrees

ASSOCIATE OF ARTS

- General Transfer (MTA)
- Elementary Education

ASSOCIATE OF APPLIED SCIENCE

- Engineering Tech
- Manufacturing
- Medical Assisting
- Welding
- Culinary

ASSOCIATE OF GENERAL STUDIES

CAREER CERTIFICATES

- Computer Information Systems (CIS)
 - Michigan Early/Middle College Association (MEMCA) Certificate (*pending approval by MDE*)
- *Additional programs may be available in the future



Berrien County 5th Year Early/Middle College

WHERE WILL I TAKE MY CLASSES?

You'll take classes at your high school or Berrien County CTE PA 56 Shared-Time Programs, and on the campuses of Lake Michigan College.

SOUNDS LIKE A CHALLENGE. WILL I HAVE HELP?

Absolutely! Support systems like the Summer College Success Bootcamp, Early/Middle College seminars and mentors, plus all the regular advising, tutoring, and library services from your high school and LMC will help you be successful.

GET STARTED OR ASK QUESTIONS

- Contact your local high school counseling office
- Call Larissa Hunt, at (269) 927-8170
- Email lhunt@lakemichigancollege.edu
- Visit lakemichigancollege.edu/earlycollege

THIS SOUNDS LIKE A SIGNIFICANT COMMITMENT

Students who elect to enroll in the Berrien County 5th Year Early Middle College commit to:

- attend a week long Summer College Success Bootcamp during summer vacation.
- successfully complete college course work in their junior and senior years of high school.
- extend their high school graduation date by one school year. Students will however participate in commencing with their original graduating class.
- the completion of an associate's degree or certification to their high school graduation expectations.

The Berrien County Early/Middle College program is a partnership between Berrien RESA and Lake Michigan College. Availability of the above programs and certificates will depend on student enrollment.

In 2015, Lake Michigan College partnered with 30 high schools throughout the region, helping 1,318 students earn college credits before graduation. Visit lakemichigancollege.edu/earlycollege for more information.

Berrien RESA and Lake Michigan College comply with all federal and state laws and regulations prohibiting discrimination and with all requirements and regulations of the United States Department of Education and the Michigan State Department of Education. It is the policy of the Berrien Regional Education Service Agency not to discriminate in its policies and practices with respect to compensation, terms, or conditions of employment because of an individual's race, color, religion, sex, national origin, height, weight, marital status, political belief, genetic information, disability or handicap which does not impair an individual's ability to perform adequately in that individual's particular position or activity. Any inquiries regarding the nondiscrimination policy should be addressed to:
Lynda Hurlow, Director of Human Resources, Berrien RESA, 711 St. Joseph Ave. Berrien Springs, MI 49103

Call Larissa Hunt, at (269)-927-8170 or visit lakemichigancollege.edu/earlycollege